

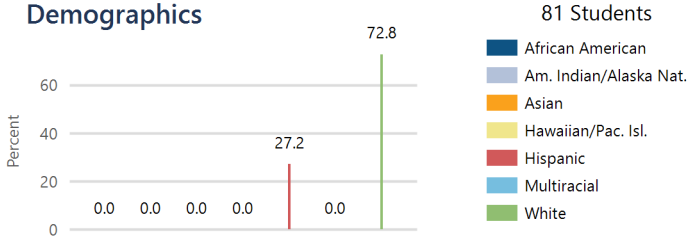


**Cheylin Elementary -**  
**Cheylin USD 103**

121 E.Sixth, Bird City, KS 67731  
 (785) 734-2351  
<https://www.cheylin.com/>  
 Principal: **Andrew Bouza**

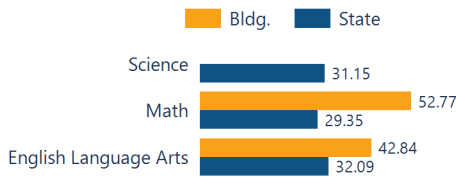
System Accreditation Status: **Accredited**  
 ESSA Annual Meaningful Differentiation: **Meeting**  
 Grades: **PK-6**  
 Superintendent: **Sherri Edmundson**

**Demographics**



**Academically Prepared for Postsecondary Success**

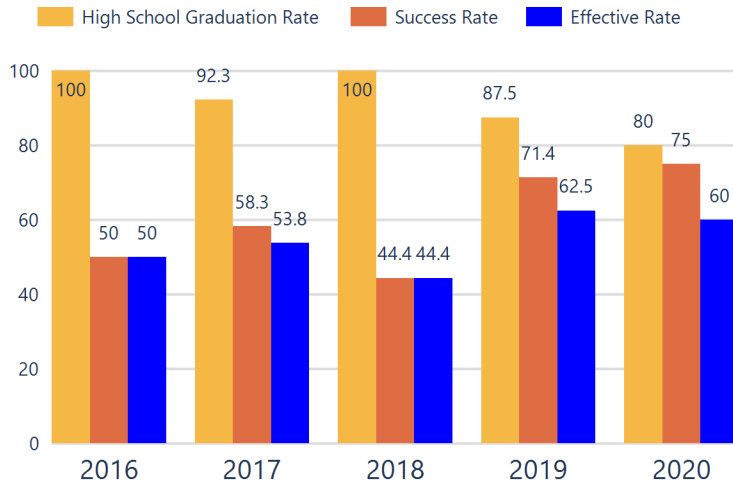
The percentage of students who scored at Levels 3 and 4 on the state assessment.



**District Kansans Can Star Recognition**

	Gold	Silver	Bronze	Copper
Social-Emotional Growth				
Kindergarten Readiness				
Individual Plan of Study				
Academically Prepared for Postsecondary				★
Civic Engagement				
High School Graduation				
Postsecondary Success				★

**District Postsecondary Effectiveness**



**Kansas CAN lead the world!**  
 Graduation **95%**  
 Effective Rate 70-75%

**Five-Year Graduation Avg**  
**93.6%**

**Five-Year Success Avg**  
**56.8%**

**Five-Year Effective Avg**  
**53.2%**

**95% Confidence Interval for the Predicted Effectiveness Rate**  
**44.2 - 47.3%**

The numerator and denominator in the Five-Year Averages contain total student counts over five years (2016-2020) and are rounded to the nearest whole number.

- Graduation Rate:** The 4-year adjusted cohort graduation rate is the number of students who graduate in four years with a regular high school diploma divided by the number of students who entered high school as 9th graders four years earlier (adjusting for transfers in and out).
- Success Rate:** A student must meet one of the four following outcomes within two years of High School graduation.
  - Student earned an Industry Recognized Certification while in High School.
  - Student earned a Postsecondary Certificate.
  - Student earned a Postsecondary Degree.
  - Student enrolled in Postsecondary in both the first and second year following High School graduation.
- Effective Rate:** The calculated Graduation Rate multiplied by the calculated Success Rate.

**GRADUATION RATE**

The four-year adjusted cohort graduation rate is the percentage of students in a cohort, adjusted for transfers into and out of the school, district, or state, who graduate with a regular high school diploma within four years of entering high school.

**ATTENDANCE RATE**

Rate at which students are present at school, not including excused or unexcused absences.

**CHRONIC ABSENTEEISM**

Percentage of students who miss 10% or more of school days per year either with or without a valid excuse.

**DROPOUT RATE**

The dropout rate is calculated annually and reflects the number of seventh– twelfth grade students who drop out in any one school year. A dropout is any student who exits school between October 1 and September 30 with a dropout EXIT code AND does not re-enroll in school by September 30.

State: **N/A**  
 89.3

State: **90.4%**  
 92.1

State: **18.0%**  
 25.4

State: **N/A**  
 1.4

**School ESSA Operating Expenditures Per Pupil**

Expenditures reflect those for the normal day-to-day operation of schools as reported by the Local Education Agency. The following expenditures are excluded: capital outlay, school construction and building improvements, equipment and debt services.

**\$15,837**  
 State: **\$13,830**

[Click here for State Financial Accountability.](#)



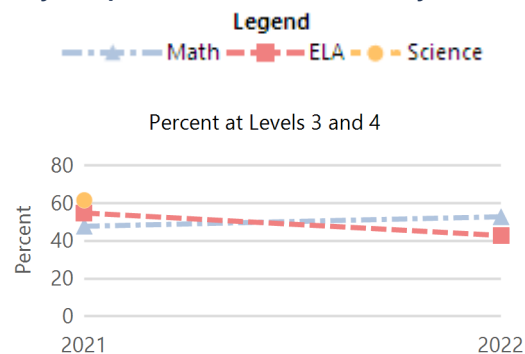
### School Academic Success

State Assessment scores are displayed by student subgroup over three years time in three subjects: Math, English Language Arts (ELA), and Science. Assessment scores are not available for the 2020 school year.

### Academically Prepared for Postsecondary Success

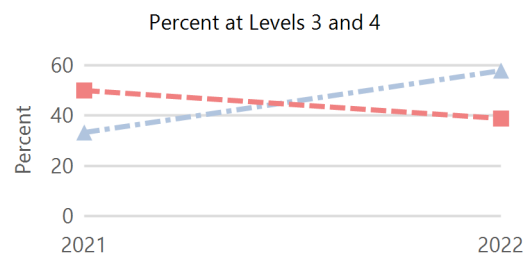
#### ALL STUDENTS

	2019-20			2020-21			2021-22		
	Math	ELA	Sci	Math	ELA	Sci	Math	ELA	Sci
Level 1	N/A	N/A	N/A	13.63	14.28	0.00	16.66	28.57	N/A
Level 2	N/A	N/A	N/A	38.63	30.95	38.46	30.55	28.57	N/A
Level 3	N/A	N/A	N/A	34.09	42.85	53.84	44.44	31.42	N/A
Level 4	N/A	N/A	N/A	13.63	11.90	7.69	8.33	11.42	N/A



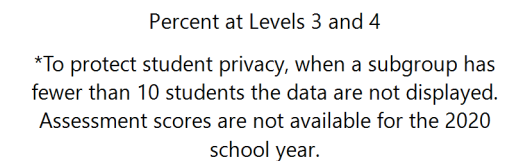
#### FREE AND REDUCED LUNCH STUDENTS

	2019-20			2020-21			2021-22		
	Math	ELA	Sci	Math	ELA	Sci	Math	ELA	Sci
Level 1	N/A	N/A	N/A	4.76	15.00	N/A	21.05	22.22	N/A
Level 2	N/A	N/A	N/A	61.90	35.00	N/A	21.05	38.88	N/A
Level 3	N/A	N/A	N/A	28.57	45.00	N/A	52.63	33.33	N/A
Level 4	N/A	N/A	N/A	4.76	5.00	N/A	5.26	5.55	N/A



#### STUDENTS WITH DISABILITIES

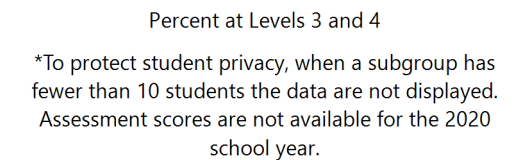
	2019-20			2020-21			2021-22		
	Math	ELA	Sci	Math	ELA	Sci	Math	ELA	Sci
Level 1	N/A	N/A	N/A	N/A	N/A	N/A	N/A	N/A	N/A
Level 2	N/A	N/A	N/A	N/A	N/A	N/A	N/A	N/A	N/A
Level 3	N/A	N/A	N/A	N/A	N/A	N/A	N/A	N/A	N/A
Level 4	N/A	N/A	N/A	N/A	N/A	N/A	N/A	N/A	N/A



\*To protect student privacy, when a subgroup has fewer than 10 students the data are not displayed. Assessment scores are not available for the 2020 school year.

#### AFRICAN-AMERICAN STUDENTS

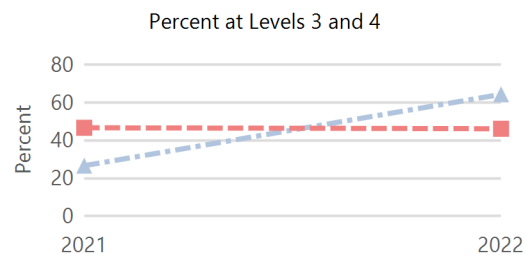
	2019-20			2020-21			2021-22		
	Math	ELA	Sci	Math	ELA	Sci	Math	ELA	Sci
Level 1	N/A	N/A	N/A	N/A	N/A	N/A	N/A	N/A	N/A
Level 2	N/A	N/A	N/A	N/A	N/A	N/A	N/A	N/A	N/A
Level 3	N/A	N/A	N/A	N/A	N/A	N/A	N/A	N/A	N/A
Level 4	N/A	N/A	N/A	N/A	N/A	N/A	N/A	N/A	N/A



\*To protect student privacy, when a subgroup has fewer than 10 students the data are not displayed. Assessment scores are not available for the 2020 school year.

#### HISPANIC STUDENTS

	2019-20			2020-21			2021-22		
	Math	ELA	Sci	Math	ELA	Sci	Math	ELA	Sci
Level 1	N/A	N/A	N/A	13.33	20.00	N/A	14.28	23.07	N/A
Level 2	N/A	N/A	N/A	60.00	33.33	N/A	21.42	30.76	N/A
Level 3	N/A	N/A	N/A	26.66	46.66	N/A	57.14	38.46	N/A
Level 4	N/A	N/A	N/A	0.00	0.00	N/A	7.14	7.69	N/A



N/A: To protect student privacy, when a subgroup has fewer than 10 students, the data are not displayed.

### ACT Performance (2022 School Year)

ACT is a national college admissions exam that includes subject level tests in English, Math, Reading and Science. Students receive scores that range from 1 to 36 on each subject and an overall Composite score. This report provides the average Composite score for the 2022 graduating seniors who took the ACT as sophomores, juniors, or seniors.

Note: Not all eligible students completed an ACT.

Building

State

19.8

